

Brissac

FOR YOUR CLIENTS DISCOVERING THE LOIRE VALLEY FOR THE FIRST TIME

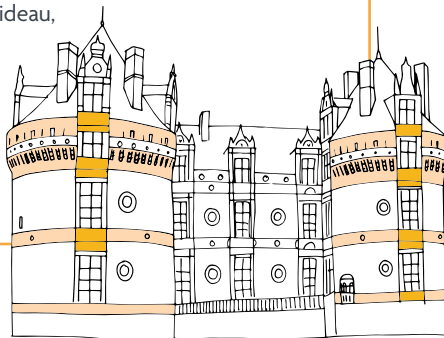
☀️ 4 DAYS 📍 315 KM

1

# LOIRE VALLEY: ROYAL CHATEAUX & HIDDEN TREASURES

## Highlights of the trip:

- The Loire Valley, a UNESCO world heritage site
- Great Chateaux: Villandry, Azay-le-Rideau, Chinon, le Rivau, Brézé and Brissac
- The Royal Abbey of Fontevraud
- Angers, capital of Anjou
- The creative city of Nantes and Les Machines de l'île



## Day 1

50 KM



The Loire  
is the longest river  
in France (1,012km)



### Morning | Tours & Château & Gardens of Villandry

Access: by TGV at Tours train station

#### Guided tour of Tours

**Tour of the Château and gardens de Villandry**, renowned for its magnificent French formal gardens which provide an enchanting setting for the last Loire Chateau built during the Renaissance.

**Lunch in Villandry**, close to the famous Chateau and gardens.

### Afternoon | Azay-le-Rideau & Chinon

#### Tour of the Château of Azay-le-Rideau

Discover this stunning Renaissance architecture beautifully reflected in its water mirror.

#### Dinner in Chinon

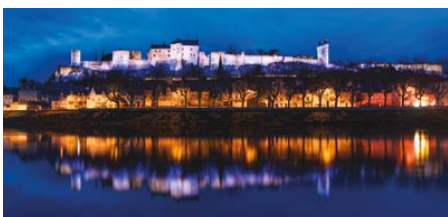
#### Night at 3\* Diderot Hotel in Chinon

## Day 2

55 KM



The Loire Valley  
is known as  
the "Garden  
of France"



### Morning | Chinon

**Discover the Chinon fortress**, like a crown perched on high, the royal fortress of Chinon peacefully reigns over the city.

#### Lunch in Chinon

### Afternoon | Rivau & Saumur

#### Explore Château du Rivau.

The medieval fortress reveals an enchanted world in which the footsteps of knights, fair ladies and war horses still echo today.

**Take your time** for a late afternoon stroll along the cobbled streets of **Saumur**

**Dinner at "l'Orangerie" restaurant in Saumur**, a typical restaurant in the courtyard of the Chateau

**Night at the 4\* Hôtel Mercure Bord de Loire in Saumur**, facing the Loire River and the Chateau.

> *Alternative: Night at the 4\* hotel and spa Anne d'Anjou-The Originals Collection in Saumur.*

## Day 3

120 KM



Around Saumur, you will find nearly 1,200km of troglodytes / cave-dwelling in tufa stone!



### Morning | Château de Brézé

**Explore Château de Brézé.** Considered one of the most intriguing Loire Chateaux, it features the deepest moat in Europe (up to 20 metres deep) and is built on a real underground fortress.

**Lunch at “Le Castellane” restaurant** in 4\* Château Le Prieuré – Younan Collection with a unique panorama over the River Loire.

### Afternoon | Château de Brissac & Angers

Known as the “Giant of the Loire Valley” with its 7 floors, **the Château de Brissac** is the tallest Chateau in France. You can live the great life by sleeping in one of the B&B bedrooms and taste wine from its vineyard.

**Dinner at the “Brasserie du Théâtre” restaurant**, by the main square in Angers.

> *Alternative: Dinner at “Pont-Pont” restaurant, overlooking the Chateau*

**Night at the 4\* Hôtel d'Anjou**, Angers

> *Alternative: Night at 4\* Hôtel de France, Angers*

## Day 4

90 KM



The novelist Jules Verne, who wrote «Around the world in eighty days», was born in Nantes in 1828

### Morning | Château de Serrant & Nantes

**Explore the Château de Serrant**, home to one of the finest collections of furniture and artworks, including a library of 12,000 books and fully equipped kitchens.

**Lunch in the theatre district in Nantes.**

Elegant and cultural, the Graslin district is a gem of 18<sup>th</sup> and 19<sup>th</sup> century urban planning. Graslin is reputed for its chic shops, its gourmet restaurants, its Passage Pommeraye, the only three-storey covered arcade in Europe.

### Afternoon | Nantes

**Follow the green line in Nantes.**

A green line literally painted on the ground enables visitors to discover all the main city landmarks, from the Château des ducs de Bretagne to the latest artworks of Le Voyage à Nantes. Get ready!

**Dinner in Nantes city centre**

Dine in a restaurant recommended by the selection Les Tables de Nantes. Fresh, creative, and healthy: Nantes' cuisine will delight you!

**Night at the 4\* Maisons du Monde Hotel & Suites in Nantes.**

> *Alternative: 4\* Oceania “Hôtel de France”, Nantes*

Depart from Nantes – TGV station or international airport

## CONTACTS OF SUPPLIERS

### 4\* Hotel Mercure Bords de Loire, Saumur

h6648-gm@accor.com

### Château de Brézé

visite@chateaubreze.com

### Le Castellane Restaurant in 4\* Hotel Le Prieuré, Saumur

reception.prieure@younancollection.com

### Château de Brissac

bureau@chateaubrissac.net

### Brasserie du Théâtre Restaurant, Angers

brasserie.du.theatre@wanadoo.fr

### 4\* Hotel d'Anjou - Angers

groupes@hoteldanjou.fr

### Château de Serrant

contact@chateau-serrant.net

### 4\* Hotel Maisons du Monde Hotel & Suites, Nantes

direction.nantes@maisonsdumondehotel.com

# INTERESTED IN CULTURE, CHATEAUX AND GARDENS?

PLEASE FIND BELOW ADDITIONAL SUGGESTIONS IN ATLANTIC LOIRE VALLEY

## 1 The Château de Montreuil-Bellay, Saumur area

15 km South of Saumur, the Chateau combines the grace of the Renaissance and the power of medieval military architecture. It is a private historical monument, inhabited, furnished and open to visitors who can marvel at its 600 metres of wall, 13 flanking towers, an impregnable citadel!

• At the entrance of Fontenay-le-Comte, in Southern Vendée, you cannot fail to notice **2 the Château of Terre-Neuve** built at the very end of the XVI<sup>e</sup> century. Terre-Neuve was the work of an artist and a poet at the same time. Chateau & museum / guided tours and fun visit for children.

• **Stay in a chateau and live a king's life!** Under the national label "Bienvenue au Chateau", you will find a selection of the most beautiful chateaux and mansions steeped in history and reflecting the affection of the present owners. Many places are located in Atlantic Loire Valley!

## • The wonders of the Loire Valley all in one place – Troglodyte Nature in the Saumur area

**Pierre et Lumière** is one of the most impressive cave dwelling sites in Saumur. You will travel the equivalent of 200 kilometres and discover several sculptures representing the most emblematic monuments of the Loire Valley carved in tufa stone.

**The Mushroom Museum:** Come and discover the secrets of mushroom growing, in a surprising and mysterious atmosphere.

**The Puygirault garden:** A plant garden rather than a flower garden, the various vegetable squares will introduce you to more than 1,000 plants across 2 hectares. A place of relaxation and education, this garden is respectful of our planet.

## • The Southern Vendée abbeys, a well-hidden secret

**The Abbey of Maillezais** is the largest historical site of the Marais Poitevin. Once a powerful fortress, Romanesque abbey then Gothic cathedral, Maillezais has witnessed religious, economic and artistic influences.

**3 The Royal Abbey of Nieul-sur-l'Autise,** where technologies reveal the stone: In the heart of a charming village, an architectural gem enhanced by a unique restoration, opens its doors to you for a visit on the border between the real and the virtual. Guided tours.

For more details: [b2b@solutions-eco.fr](mailto:b2b@solutions-eco.fr)

